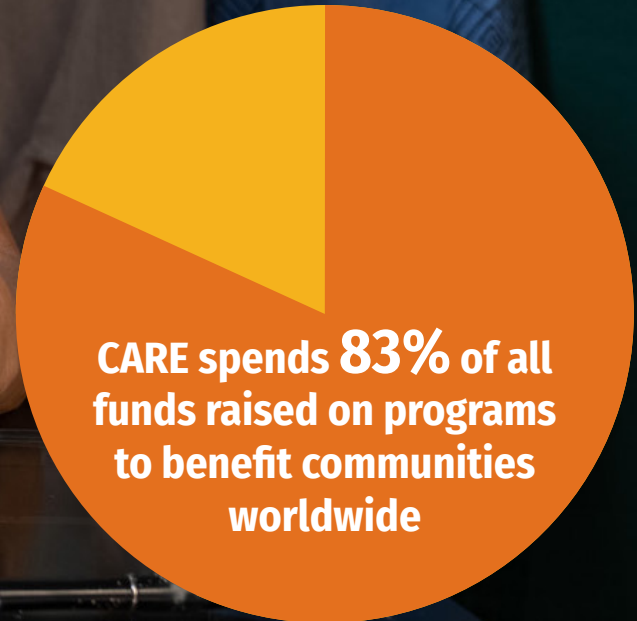




2019 FINANCIAL OVERVIEW



	CARE Australia	CARE Canada	CARE Denmark	CARE Germany	CARE France	CARE India	CARE Japan	CARE Netherlands	CARE Norway	CARE Austria	CARE Peru	Raks Thai	CARE Int'l UK	CARE USA	Care Int'l Secretariat	CARE Int'l AISBL	Comb. Adj.	Total 2019	Total 2018
COMBINED STATEMENT OF ACTIVITY AND NET ASSETS FOR THE FINANCIAL YEAR 2019 ('000 EURO)																			
SUPPORT AND REVENUE																			
Donor contributions	6,665	4,195	2,758	15,524	12,448	2,904	507	6,609	27,006	7,321	748	859	12,626	135,498	708	2,622	-3,331	235,668	211,892
Programs contracted with member organizations	8,703	23,219	-	2,759	9,517	17,747	-	65	-	-	3,525	369	989	154,102	3,127	3,424	-227,548	-	-
Contributions in kind	90	4,502	-	-	-	-	6	-	-	2,018	1	245	263	24,521	-	35	-35	31,646	39,374
Government and non-governmental agencies grants	24,454	41,793	13,215	39,825	14,952	3,128	339	62,230	14,742	23,184	3,724	7,431	59,522	219,088	29	9,621	-9,650	527,626	442,056
Interest and other income	1,177	1,078	349	438	205	427	10	35	106	31	123	153	441	8,704	-	463	-463	13,277	11,573
Administrative support	-	-	-	-	-	-	-	-	-	-	-	-	-	-	5,341	-	-5,341	-	-
TOTAL SUPPORT AND REVENUE	41,089	74,787	16,322	58,547	37,122	24,206	862	68,939	41,854	32,554	8,121	9,058	73,841	541,913	9,205	16,166	-246,368	808,217	704,895
EXPENSES																			
Development program activities	30,798	32,024	11,055	14,394	20,792	20,160	604	39,801	10,291	14,175	4,420	8,353	19,880	288,689	2,227	12,153	-138,940	390,876	358,302
Humanitarian program activities	5,241	37,954	3,104	36,991	9,396	821	27	25,493	5,705	10,496	2,461	22	47,669	187,969	3,325	1,865	-102,088	276,451	244,525
Supporting services, fundraising spend and other expenses	5,463	5,228	2,328	7,658	5,972	2,752	256	5,492	6,666	6,697	1,100	545	8,338	58,649	3,977	1,944	-5,341	117,724	111,054
TOTAL EXPENSES	41,502	75,206	16,488	59,043	36,160	23,733	886	70,786	22,661	31,368	7,981	8,921	75,887	535,306	9,529	15,962	-246,368	785,051	713,882
EXCESS (DEFICIENCY)	-413	-419	-166	-496	962	473	-24	-1,847	19,193	1,186	140	137	-2,046	6,607	-324	204		23,166	-8,987
Net assets, beginning of year (restated)	8,540	4,506	1,283	2,529	3,398	3,214	505	9,076	5,721	8,647	4,617	4,051	17,948	317,321	2,593	1		393,951	386,798
Currency translation adjustment	-17	-	-	-	-	-	-	-	-	-	-57	-38	-	2,526	-	-		2,413	1,123
Other changes	1,239	-6	-57	-2	0	-6	2	3	-37	-	682	61	32	4,079	-7	1,117		7,099	5,991
NET ASSETS	9,349	4,081	1,060	2,031	4,360	3,681	483	7,231	24,877	9,833	5,382	4,210	15,935	330,532	2,262	1,322	-	426,629	384,924

COMBINED BALANCE SHEET FOR THE FINANCIAL YEAR 2019 ('000 EURO)																			
ASSETS																			
Cash and short term investments	14,501	21,717	2,781	11,072	8,668	7,847	292	2,381	29,635	12,388	502	6,784	15,039	177,245	3,686	6,146	-	320,685	330,602
Receivables from governmental and non-governmental agencies	3,528	6,443	910	16,686	9,997	1,729	14	18,969	-	9,210	2,358	52	14,408	120,455	3,959	4,713	-54,726	158,705	110,279
Deposits and other assets	8,607	306	519	246	722	378	284	18,501	100	52	3,731	1,336	44	157,922	28	46	-	192,822	165,576
Property and equipment, net	624	2,410	152	614	424	466	7	19	165	350	715	24	503	17,739	-	301	-	24,513	21,941
TOTAL ASSETS	27,261	30,876	4,361	28,618	19,811	10,419	597	39,871	29,901	22,000	7,306	8,196	29,993	473,362	7,672	11,205	-54,726	696,725	628,398
LIABILITIES AND FUND BALANCE																			
Accounts payable and accrued expenses	1,407	5,211	-	16,997	8,013	-	57	-	-	176	-	54	4,079	37,264	1,008	1,872	-	76,139	59,335
Advances by governmental and non-governmental agencies	14,106	21,584	2,130	9,408	6,140	370	24	-	4,143	10,324	1,924	2,003	8,735	72,254	1,133	7,041	-54,726	106,594	99,705
Debt and other liabilities	2,400	-	1,171	182	1,298	6,369	33	32,640	881	1,667	-	1,928	1,244	33,311	3,269	971	-	87,363	84,434
TOTAL LIABILITIES	17,913	26,795	3,301	26,587	15,451	6,739	114	32,640	5,024	12,167	1,924	3,986	14,058	142,830	5,410	9,883	-54,726	270,096	243,474
NET ASSETS	9,349	4,081	1,060	2,031	4,360	3,681	483	7,231	24,877	9,833	5,382	4,210	15,935	330,532	2,262	1,322	-	426,629	384,924
TOTAL LIABILITIES AND NET ASSETS	27,261	30,876	4,361	28,618	19,811	10,419	597	39,871	29,901	22,000	7,306	8,196	29,993	473,362	7,672	11,205	-54,726	696,725	628,398