

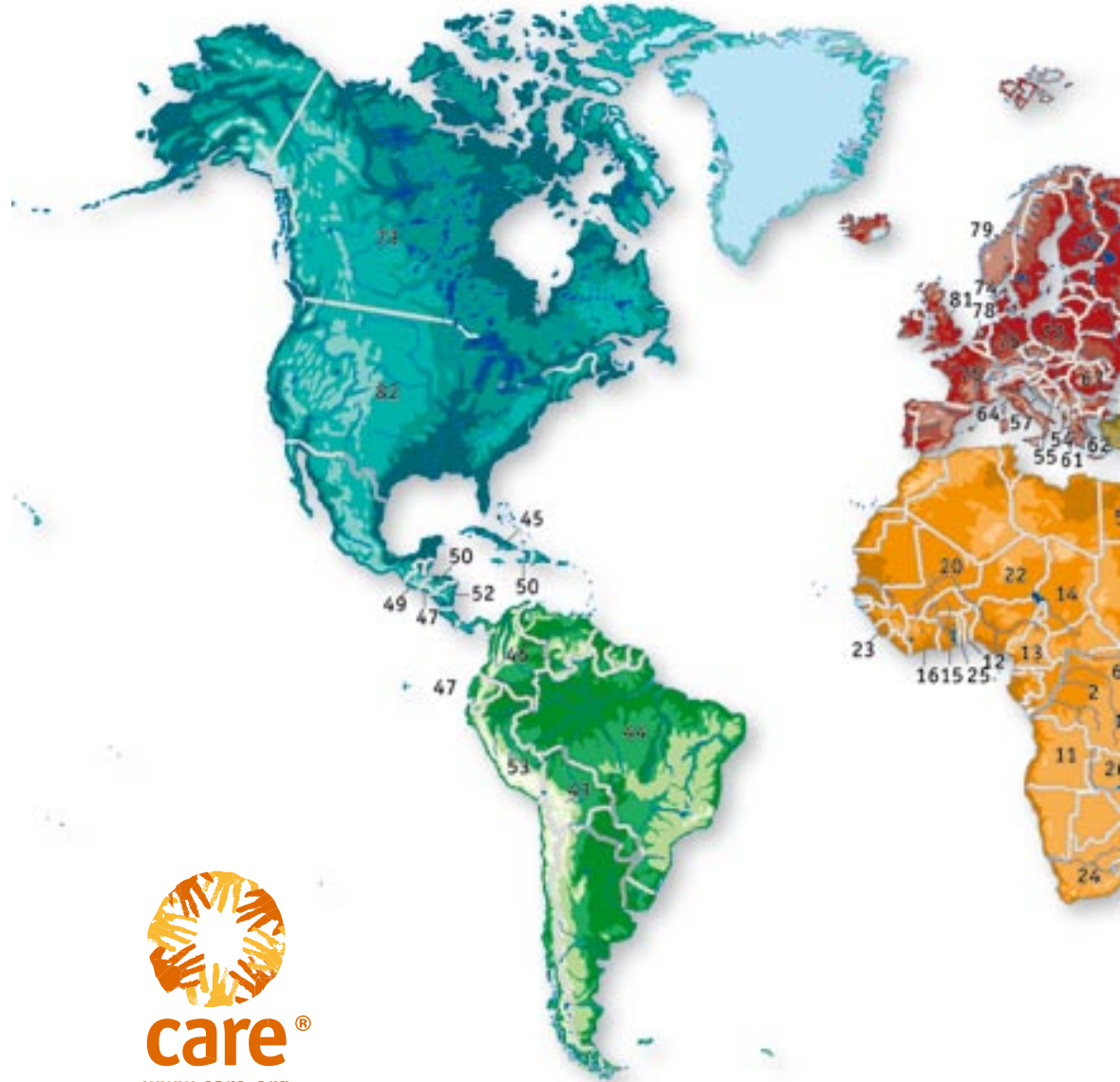


CARE[®]



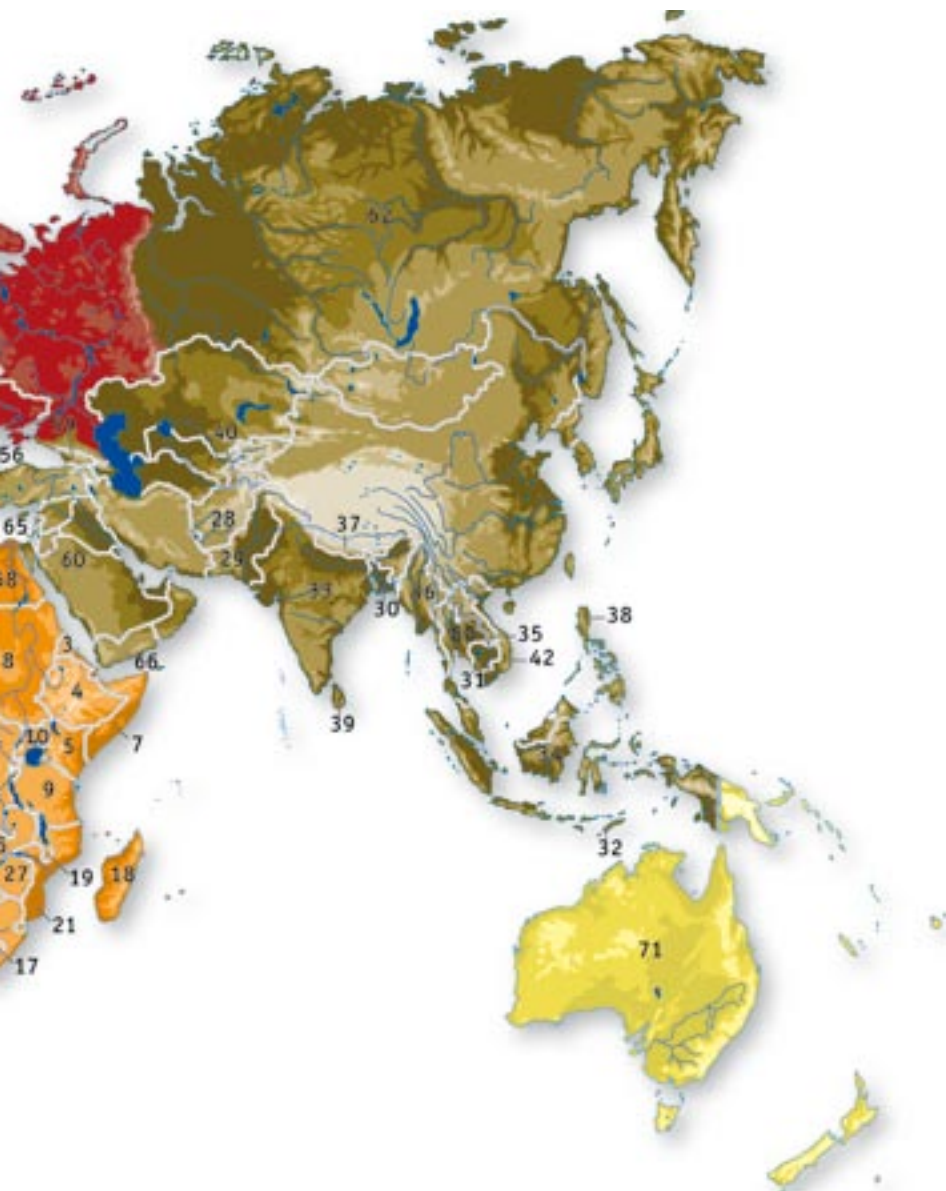
CARE Facts & Figures **2004**

The world of CARE



CARE International Member countries:

71 Australia	75 France	79 Norway
72 Austria	76 Germany	80 Thailand
73 Canada	77 Japan	81 United Kingdom
74 Denmark	78 Netherlands	82 United States



Countries with ongoing CARE programming:

east and central africa	southern and west africa	asia	latin america and the caribbean	middle east and europe
1 Burundi	11 Angola	28 Afghanistan	43 Bolivia	54 Albania
2 Democratic Republic of Congo	12 Benin	29 Pakistan	44 Brazil	55 Bosnia / Herzegovina
3 Eritrea	13 Cameroon	30 Bangladesh	45 Cuba	56 Bulgaria
4 Ethiopia	14 Chad	31 Cambodia	46 Colombia	57 Croatia
5 Kenya	15 Ghana	32 East Timor	47 Ecuador	58 Egypt
6 Rwanda	16 Ivory Coast	33 India	48 El Salvador	59 Georgia
7 Somalia	17 Lesotho	34 Indonesia	49 Guatemala	60 Jordan
8 Sudan	18 Madagascar	35 Laos	50 Haiti	61 Kosovo
9 Tanzania	19 Malawi	36 Myanmar	51 Honduras	62 Macedonia
10 Uganda	20 Mali	37 Nepal	52 Nicaragua	63 Russian Federation
	21 Mozambique	38 Philippines	53 Peru	64 Serbia & Montenegro
	22 Niger	39 Sri Lanka		65 West Bank / Gaza
	23 Sierra Leone	40 Tajikistan		66 Yemen
	24 South Africa	80 Thailand		67 Romania
	25 Togo	42 Vietnam		
	26 Zambia			
	27 Zimbabwe			



CARE INTERNATIONAL AND ITS MEMBERS

COMBINED STATEMENT OF ACTIVITY AND NET ASSETS FOR THE YEAR ENDED JUNE 30, 2004 - USD' 000

	CARE Australia	CARE Canada	CARE Danmark	CARE Deutschland	CARE France	CARE Japan	CARE Nederland	CARE Norge	CARE Osterreich	CARE Int'l UK	CARE Raks Thai	CARE USA	CARE Int'l Secretariat	Comb. Adj.	Total 2004	Total 2003
SUPPORT AND REVENUE																
Agricultural commodities	0	0	0	0	0	0	0	0	0	0	0	103.516	0	0	103.516	87.694
Donor contributions	3.432	4.599	1.403	3.206	7.492	296	534	1.597	2.193	6.733	1.098	74.826	0	0	107.409	121.718
Programs contracted with member organizations	26.261	46.536	0	0	0	0	0	0	0	0	0	98.124	0	-170.920	0	0
Contributions in kind	40	43.065	0	1	109	0	2.018	0	0	0	0	1.289	0	0	46.523	38.442
Government and non-governmental agencies grants	11.757	31.269	7.635	8.516	6.259	295	11.163	11.000	9.788	54.760	2.714	289.396	0	0	444.552	406.945
Interest and other income	542	2.436	165	638	187	101	1.118	24	99	294	17	4.944	15	0	10.581	14.434
Administrative support	0	0	29	13	251	0	827	115	0	0	0	0	2.233	-3.467	0	0
Total support and revenue	42.032	127.904	9.232	12.375	14.298	692	15.660	12.736	12.081	61.788	3.829	572.095	2.248	-174.387	712.582	669.233
EXPENSES																
Development program activities and disaster and emergency relief	38.442	123.593	8.869	9.885	9.905	361	13.181	10.323	11.324	56.851	3.770	506.863	0	-170.920	622.446	553.200
Supporting services and other expenses	3.275	4.147	2.511	2.895	4.180	321	2.262	1.903	823	7.947	244	54.654	2.210	-3.467	83.906	78.630
Total expenses	41.716	127.740	11.380	12.780	14.085	682	15.443	12.226	12.147	64.798	4.014	561.517	2.210	-174.387	706.352	631.830
EXCESS (DEFICIENCY)																
Net assets, beginning of year	1.799	2.557	635	1.611	1.082	1.250	984	294	840	6.551	1.280	222.382	897	0	242.160	195.834
Other changes	0	0	1.673	1.118	399	-64	0	-134	386	2.398	682	15.025	0	0	21.482	7.767
Currency translation adjustment	398	318	89	228	153	168	139	10	-139	627	-1	0	0	0	1.990	1.155
Net assets, end of year	2.512	3.038	248	2.551	1.847	1.364	1.340	680	1.021	6.566	1.776	247.985	935	0	271.861	242.160

CARE INTERNATIONAL AND ITS MEMBERS



COMBINED BALANCE SHEET FOR THE YEAR ENDED JUNE 30, 2004 - USD' 000

	CARE Australia	CARE Canada	CARE Danmark	CARE Deutschland	CARE France	CARE Japan	CARE Nederland	CARE Norge	CARE Osterreich	CARE Int'l UK	CARE Raks Thai	CARE USA	CARE Int'l Secretariat	Comb. Adj.	Total 2004	Total 2003
ASSETS																
Cash and short term investments	8.870	20.447	963	4.216	2.512	180	3.483	3.411	5.594	5.875	2.910	259.663	910	0	319.030	261.895
Receivables from governmental and non-governmental agencies	267	12.570	1.096	3.583	2.801	8	15.944	255	69	6.783	269	65.988	241	-6.485	103.389	96.282
Deposits and other assets	104	2.379	40	30	230	1.220	54	0	1.882	360	619	118.249	134	0	125.301	176.926
Property and equipment, net	386	3.812	273	68	47	1	34	96	62	1.014	5	60.176	11	0	65.984	15.298
Total assets	9.627	39.208	2.369	8.897	5.591	1.408	19.516	3.762	7.606	14.032	3.803	503.076	1.295	-6.485	613.704	550.399
LIABILITIES AND FUND BALANCE																
Accounts payable and accrued expenses	739	5.985	195	218	609	19	430	225	377	1.033	52	53.762	359	-6.485	57.519	40.308
Social and fiscal liabilities	0	0	0	0	0	0	0	0	0	0	0	16.325	0	0	16.325	15.483
Advances by governmental and non-governmental agencies	5.625	27.638	1.795	5.880	3.135	22	0	2.713	5.603	0	1.422	143.725	0	0	197.558	183.694
Debt and other liabilities	750	2.257	130	249	0	4	17.745	144	606	6.433	553	41.279	0	0	70.440	68.754
Total liabilities	7.114	36,170	2,121	6,346	3,744	45	18,176	3,082	6,585	7,466	2,027	255,091	359	-6,485	341,843	308,240
Net assets	2.512	3.038	248	2.551	1.847	1.364	1.340	680	1.021	6.566	1.776	247.985	935	0	271.861	242.160
Total liabilities and net assets	9.627	39.208	2.369	8.897	5.591	1.408	19.516	3.762	7.606	14.032	3.803	503.076	1.295	-6.485	613.704	550.399



CARE INTERNATIONAL AND ITS MEMBERS

COMBINED STATEMENT OF ACTIVITY AND NET ASSETS FOR THE YEAR ENDED JUNE 30, 2004 - EURO' 000



	CARE Australia	CARE Canada	CARE Danmark	CARE Deutschland	CARE France	CARE Japan	CARE Nederland	CARE Norge	CARE Osterreich	CARE Int'l UK	CARE Raks Thai	CARE USA	CARE Int'l Secretariat	Comb. Adj.	Total 2004	Total 2003
SUPPORT AND REVENUE																
Agricultural commodities	0	0	0	0	0	0	0	0	0	0	0	86.620	0	0	86.920	84.029
Donor contributions	2.882	3.861	1.178	2.692	6.291	248	448	1.341	1.841	5.654	922	62.830	0	0	90.190	116.631
Programs contracted with member organizations	22.051	39.075	0	0	0	0	0	0	0	0	0	82.393	0	-143.518	0	0
Contributions in kind	34	36.161	0	1	92	0	1.695	0	0	0	0	1.082	0	0	39.065	36.836
Government and non-governmental agencies grants	9.872	26.256	6.411	7.151	5.256	248	9.373	9.237	8.219	45.981	2.279	243.000	0	0	373.281	389.939
Interest and other income	455	2.045	139	536	157	85	939	20	83	247	14	4.151	13	0	8.885	13.831
Administrative support	0	0	24	11	211	0	694	96	0	0	0	0	1.875	-2.911	0	0
Total support and revenue	35.293	107.398	7.752	10.391	12.006	581	13.149	10.694	10.144	51.882	3.215	480.377	1.887	-146.429	598.340	641.266
EXPENSES																
Development program activities and disaster and emergency relief	32.279	103.779	7.447	8.300	8.317	303	11.068	8.668	9.509	47.737	3.166	425.603	0	-143.518	522.656	530.082
Supporting services and other expenses	2.750	3.482	2.109	2.431	3.510	270	1.899	1.598	691	6.673	205	45.892	1.856	-2.911	70.454	75.344
Total expenses	35.028	107.261	9.556	10.732	11.827	573	12.967	10.266	10.199	54.410	3.371	471.495	1.856	-146.429	593.110	605.426
EXCESS (DEFICIENCY)																
	265	137	-1.804	-341	179	9	182	428	-55	-2.528	-155	8.882	32	0	5.231	35.840
Net assets, beginning of year	1.723	2.450	608	1.544	1.037	1.198	943	282	805	6.277	1.226	213.089	860	0	232.042	218.840
Other changes	0	0	1.405	938	335	-54	0	-113	133	2.014	572	12.616	0	0	17.847	7.225
Currency translation adjustment	122	-36	-1	0	0	-7	0	-27	-25	-250	-152	-26.359	-107	0	-26.841	-29.863
Net assets, end of year	2.110	2.551	208	2.142	1.551	1.145	1.125	571	857	5.513	1.491	208.228	785	0	228.278	232.042

CARE INTERNATIONAL AND ITS MEMBERS



COMBINED BALANCE SHEET FOR THE YEAR ENDED JUNE 30, 2004 - EURO' 000

	CARE Australia	CARE Canada	CARE Danmark	CARE Deutschland	CARE France	CARE Japan	CARE Nederland	CARE Norge	CARE Osterreich	CARE Int'l UK	CARE Raks Thai	CARE USA	CARE Int'l Secretariat	Comb. Adj.	Total 2004	Total 2003
ASSETS																
Cash and short term investments	7.448	17.169	806	4.380	2.109	151	2.925	2.864	4.697	4.933	2.444	217.194	764		267.884	250.951
Receivables from governmental and non-governmental agencies	224	10.555	920	3.008	2.352	7	13.388	214	58	5.695	226	55.409	202	-5.445	86.814	92.259
Deposits and other assets	88	1.998	34	25	193	1.024	46		1.580	303	520	99.291	112		105.213	169.532
Property and equipment, net	324	3.201	229	57	40	1	28	82	52	850	4	50.529	9		55.406	14.658
Total assets	8.083	32.922	1.989	7.471	4.695	1.183	16.387	3.160	6.387	11.781	3.194	422.423	1.088		515.316	527.400
LIABILITIES AND FUND BALANCE																
Accounts payable and accrued expenses	620	5.025	164	183	512	16	361	189	316	866	43	45.143	303	-5.445	48.296	38.622
Social and fiscal liabilities	0	0	0	0	0	0	0	0	0	0	0	13.708	0	0	13.708	14836
Advances by governmental and non-governmental agencies	4.724	23.207	1.507	4.937	2.632	18	0	2.278	4.705	0	1.194	120.683	0	0	165.886	176.018
Debt and other liabilities	630	2.139	109	209	0	4	14.901	122	508	5.401	465	34.661	0	0	59.148	65.882
Total liabilities	5.974	30.371	1.781	5.329	3.144	38	15.262	2.589	5.530	6.268	1.702	214.195	303	-5.445	287.038	295.358
Net assets	2.110	2.551	208	2.142	1.551	1.145	1.125	571	857	5.513	1.491	208.228	785	0	228.278	232.042
Total liabilities and net assets	8.083	32.922	1.989	7.471	4.695	1.183	16.387	3.160	6.387	11.781	3.194	422.423	1.088	-5.445	515.316	527.400



www.care.org



CARE's Vision Statement

We seek a world of hope, tolerance and social justice, where poverty has been overcome and people live in dignity and security.

CARE International will be a global force and a partner of choice within a worldwide movement dedicated to ending poverty. We will be known everywhere for our unshakable commitment to the dignity of people.

FACTS ABOUT CARE INTERNATIONAL

CARE International is a federation of 12 Members assisted by an international secretariat in Brussels. CARE has more than 50 years of experience in both emergency relief and long-term development efforts.

In 2004, CARE International:

- operated in 65 countries - in Africa, Asia, Latin America, the Middle East and Europe
- employed over 13.000 people, of which more than 12.000 are nationals
- supported projects worth over 622 million US\$ during FY 04
- spent 88% of its total revenues on program activities
- reached 32 million beneficiaries

